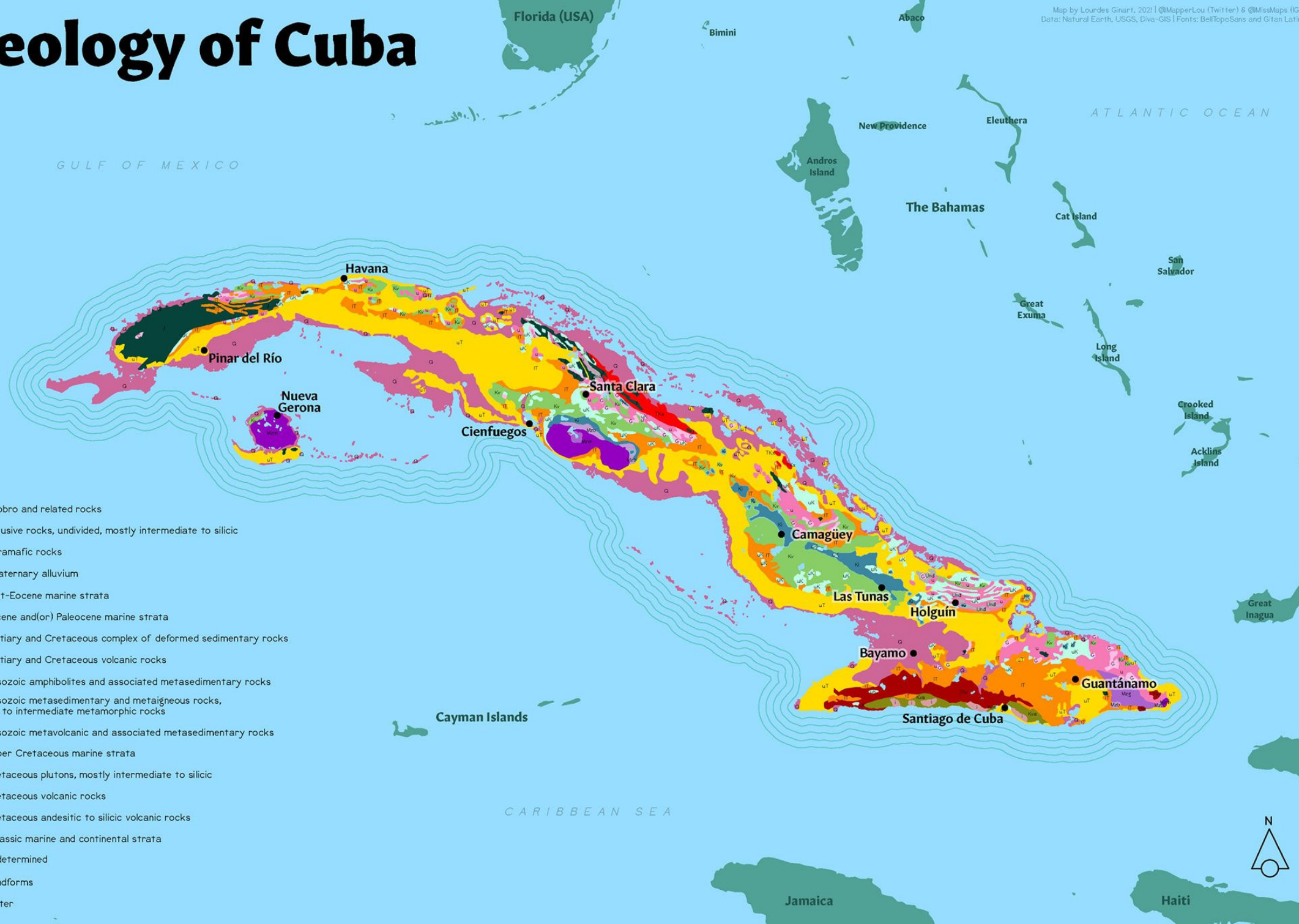


# Geology of Cuba

Map by Lourdes Gniart, 2021 | @MapperLou (Twitter) & @MissMaps (IG)  
 Data: Natural Earth, USGS, Diva-GIS | Fonts: BellTopoSans and Gitan Latin



- G Gabbro and related rocks
- i Intrusive rocks, undivided, mostly intermediate to silicic
- u Ultramafic rocks
- Q Quaternary alluvium
- uT Post-Eocene marine strata
- IT Eocene and(or) Paleocene marine strata
- TKx Tertiary and Cretaceous complex of deformed sedimentary rocks
- TKy Tertiary and Cretaceous volcanic rocks
- Mzb Mesozoic amphibolites and associated metasedimentary rocks
- Mzm Mesozoic metasedimentary and metaigneous rocks, low to intermediate metamorphic rocks
- Mzg Mesozoic metavolcanic and associated metasedimentary rocks
- uK Upper Cretaceous marine strata
- Ki Cretaceous plutons, mostly intermediate to silicic
- Kv Cretaceous volcanic rocks
- Kva Cretaceous andesitic to silicic volcanic rocks
- J Jurassic marine and continental strata
- und Undetermined
- Landforms
- Water

