

GEOLOGICAL MAP OF SYRIA

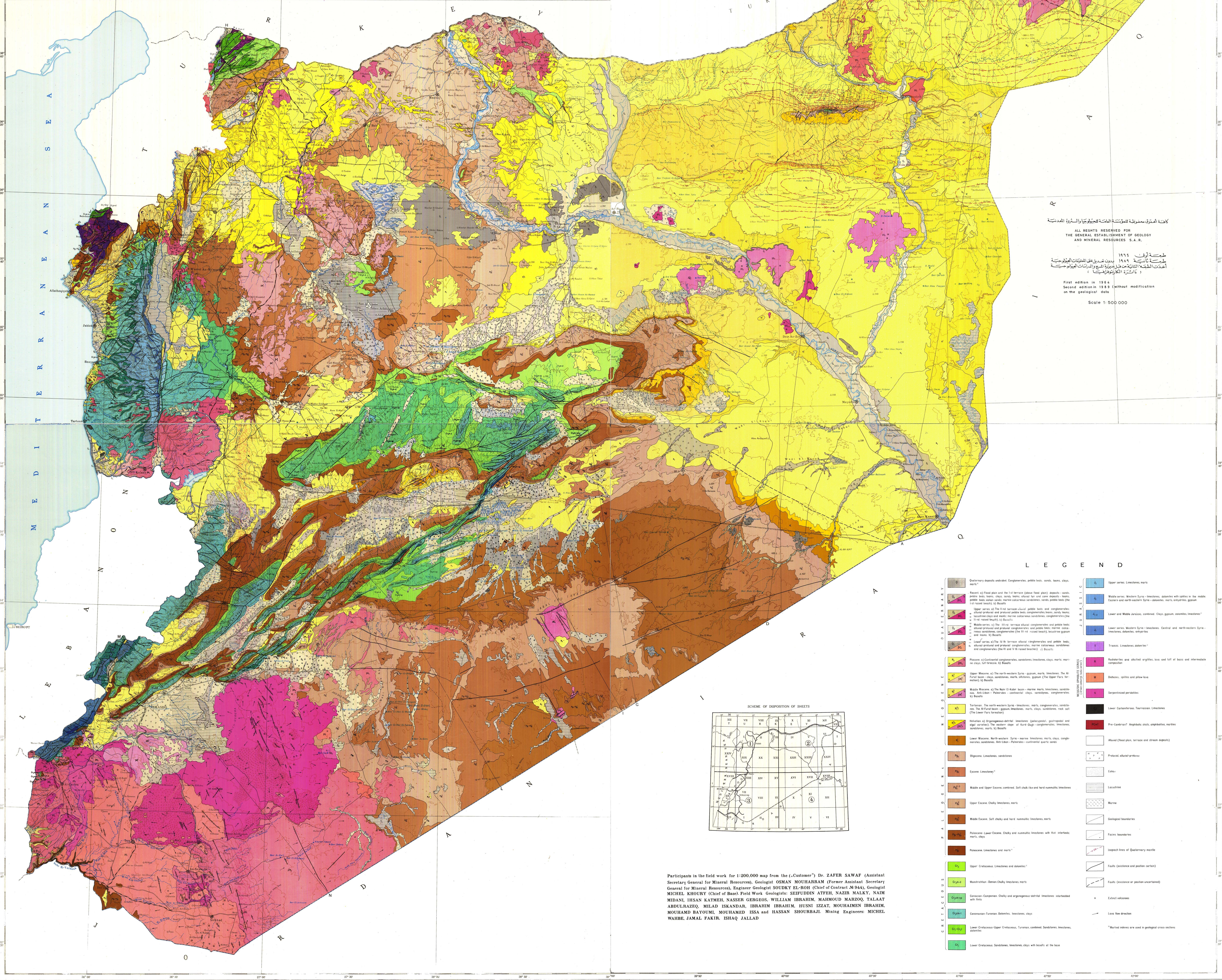
Scale 1:500,000

Editor-in-chief, Chief of the survey - V. PONIKAROV
Editor, Responsible Executor - I. MIKHAILOV

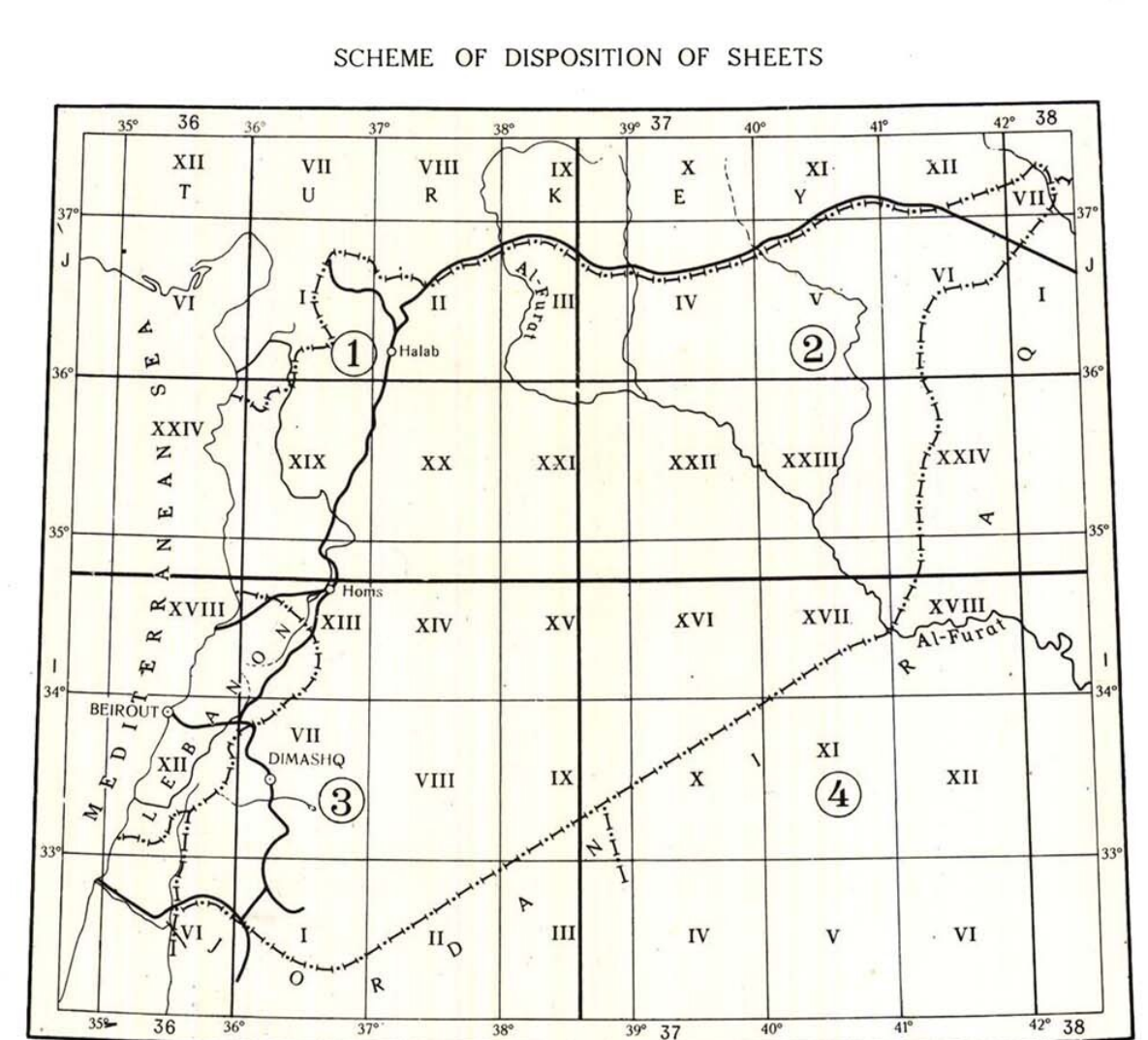
Compiled by the Soviet geologists of the geologic-survey group of V/O Technoport (Contract No 944)

1964

خريطة سورية الجيولوجية



كافة الحقوق محفوظة للمؤسسة العامة للجيولوجيا والموارد المعدنية
ALL RIGHTS RESERVED FOR
THE GENERAL ESTABLISHMENT OF GEOLOGY
AND MINERAL RESOURCES S.A.R.
طبعة أولية 1964
معدلة على أساس البيانات الجيولوجية
أعدت اللجنة من قبل سورية والبيانات الجيولوجية
أعدت الكارطوغرافيا
First edition in 1964
Second edition in 1989 (without modification
on the geological data)
Scale 1:500,000



LEGEND

- | | |
|------------------------------------------------------------------------------------------------------------------------------------------------------------------------------------------------------------------------------------------------------------------------------------------|---------------------------------------------------------------------------------------------------------------------------------------------------------------------------------|
| Quaternary deposits and soils: Conglomerates, pebble beds, sands, loess, clays, marls | Upper series Limestones, marls |
| Recent (3) Flood plain and the 1st terrace (above flood plain) deposits - sands, pebbles, loess, clays, sandy loess, silt, loam and cone sands - loess, pebbles, loess, sandy loess, marl, calcareous sandstone, marl, calcareous sandstone, pebbles, loess (the 1st terrace) (3) Bostul | Middle series: Western Syria - limestones, dolomites with nodules in the middle Eastern and north-western Syria - dolomites, marls, calcareous, gypsum |
| Upper series: (3) The 1st terrace (above flood plain) pebbles beds and conglomerates: calcareous pebbles and gravel pebbles beds, conglomerates, loess, sandy loess, loess, calcareous sandstone, marl, calcareous sandstone, pebbles, loess (the 1st terrace) (3) Bostul | Lower and Middle Jurassic, combined: Clays, gypsum, calcareous limestones |
| Middle series: (3) The 2nd terrace (above flood plain) conglomerates and pebbles beds: calcareous pebbles and gravel pebbles beds, marl, calcareous sandstone, pebbles, loess, calcareous sandstone, pebbles, loess (the 2nd terrace) (3) Bostul | Lower series: Western Syria - limestones, dolomites, Central and north-western Syria - limestones, dolomites, dolerites |
| Lower series: (3) The 3rd terrace (above flood plain) conglomerates and pebbles beds: calcareous pebbles and gravel pebbles beds, marl, calcareous sandstone, pebbles, loess, calcareous sandstone, pebbles, loess (the 3rd terrace) (3) Bostul | Triassic: Limestones, dolerites |
| Lower series: (3) The 4th terrace (above flood plain) conglomerates and pebbles beds: calcareous pebbles and gravel pebbles beds, marl, calcareous sandstone, pebbles, loess, calcareous sandstone, pebbles, loess (the 4th terrace) (3) Bostul | Permian: (3) Permian conglomerates, sandstones, limestones, clays, marls, marls, marls, calcareous sandstone (3) Bostul |
| Upper Mesozoic: (3) The north-western Syria - gypsum, marls, limestones, The Al-Faraj basin: clays, sandstones, marl, dolerites, gypsum (The Upper Fars for Marjayn) (3) Bostul | Middle Mesozoic: (3) The Marjayn basin: marls, marls, limestones, sandstones, calcareous sandstone, calcareous sandstone, calcareous sandstone, calcareous sandstone (3) Bostul |
| Middle Mesozoic: (3) The Marjayn basin: marls, marls, limestones, sandstones, calcareous sandstone, calcareous sandstone, calcareous sandstone, calcareous sandstone (3) Bostul | Triassic: Limestones, dolerites |
| Lower Mesozoic: North-western Syria - marls, limestones, marls, clays, conglomerates, sandstones, calcareous sandstone, calcareous sandstone, calcareous sandstone, calcareous sandstone (3) Bostul | Permian: (3) Permian conglomerates, sandstones, limestones, clays, marls, marls, marls, calcareous sandstone (3) Bostul |
| Dolomites, Limestones, sandstones | Dolomites, siltites and yellow loess |
| Evaporite Limestones | Serpentinized peridotites |
| Middle and Upper Eocene, combined: Soft cherty like and hard marls, limestones | Lower: Carboniferous, Turonian, Limestones |
| Upper Eocene: Cherty limestones, marls | Pre-Cambrian: Amphibolites, gneisses, marbles |
| Middle Eocene: Soft cherty like and hard marls, limestones, marls | Alluvial (flood plain, terrace and stream deposits) |
| Palaeocene-Lower Eocene: Cherty and marls, limestones with flat interbeds: marls, clays | Palaeozoic: (3) Palaeozoic |
| Palaeocene: Limestones and marls | Faults |
| Upper Ordovician: Limestones and dolerites | Lacustrine |
| Middle Ordovician: Dolomites, cherty limestones, marls | Marine |
| Lower Ordovician: Dolomites, cherty and argillaceous-dolomite limestones interbedded with limestones | Geological boundaries |
| Carboniferous: Cherty and argillaceous-dolomite limestones interbedded with limestones | Facies boundaries |
| Carboniferous-Turonian: Dolomites, limestones, clays | Approach lines of Quaternary mantle |
| Lower Ordovician: Upper Ordovician, Turonian, combined: Sandstones, limestones, dolerites | Faults (existence and position uncertain) |
| Lower Ordovician: Sandstones, limestones, clays with basalt at the base | Faults (existence and position uncertain) |

Participants in the field work for 1:200,000 map from the («Customer») Dr. ZAFER SAWAF (Assistant Secretary General for Mineral Resources), Geologist OSMAN MOUHARRAM (Former Assistant Secretary General for Mineral Resources), Engineer Geologist SOUDKY EL-BDH (Chief of Contract No 944), Geologist MICHEL KHOURY (Chief of Base), Field Work Geologists: SEIFUDDIN ATFEH, NAZIR MALKY, NAIM MIDANI, IHSAN KATMEH, NASSER GERGOOS, WILLIAM IBRAHIM, MAHMOUD MARZOQ, TALAAT ABDULRAZEQ, MILAD ISKANDAR, IBRAHIM IBRAHIM, HUSNI IZZAT, MOUHAIMEN IBRAHIM, MOUHAMED BAYOUMI, MOUHAMED ISSA and HASSAN SHOURBARI. Mining Engineers: MICHEL WAHBE, JAMAL FAKIR, ISHAQ JALLAD