

SCALE USE

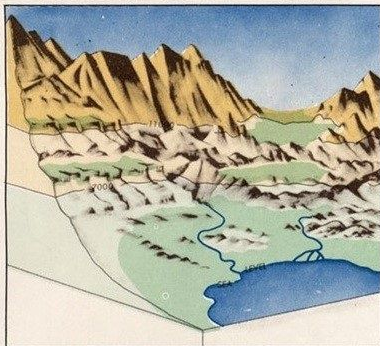
# LEGEND

## RELIEF PORTRAYAL

Elevations are in feet. HIGHEST TERRAIN elevation is **14465** feet located at **30°57'N, 51°26'E**

## TERRAIN CHARACTERISTIC TINTS

(areas of unreliable relief are devoid of tint)



GREEN color indicates flat or relatively level terrain regardless of altitude above sea level.

## CONTOUR INTERVAL

1000 feet  
Intermediate contour shown only at 500 feet  
Dashed contours indicate approximate relief

## CONTOURS

(Accuracy based on Mean Sea Level)

Contours accurate to within 500 feet..... 1000  
Contours accurate to within 650 feet..... 1000

## SPOT ELEVATIONS

(Accuracy based on Mean Sea Level)

Maximum vertical error within 100 feet..... ±0000  
Maximum vertical error within 800 feet..... ×0000  
Critical elevation..... -0000

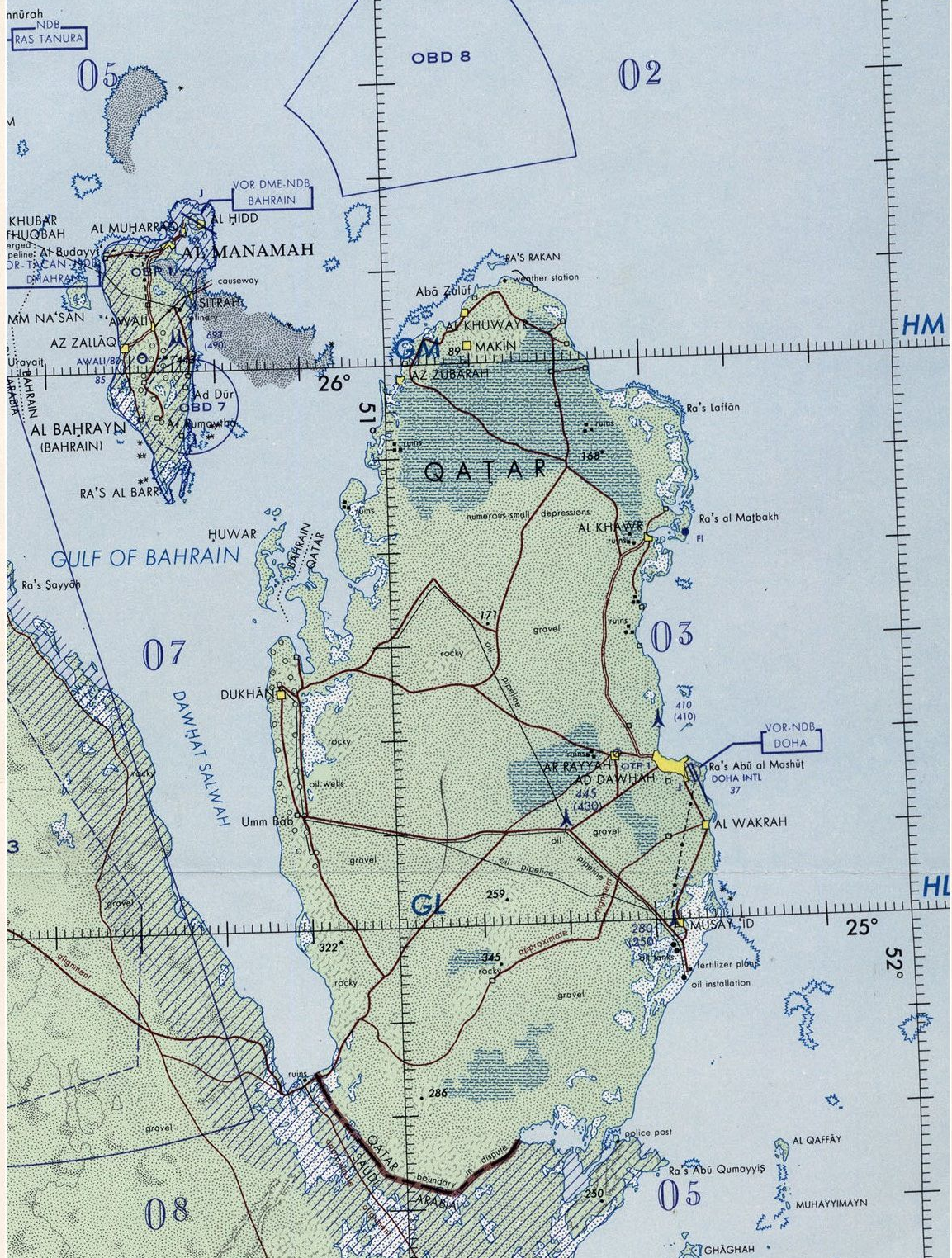
## MAXIMUM TERRAIN ELEVATIONS

Maximum Terrain elevation figures centered in the area bounded by ticked lines of LATITUDE and LONGITUDE, are represented in THOUSANDS and HUNDREDS of feet, BUT DO NOT INCLUDE ELEVATIONS OF VERTICAL OBSTRUCTIONS.

3100 feet..... 31

## CULTURE

Actual city outline..... Towns and villages (outline unknown)..... □  
Land mark features (unillustrated)..... ranch Dual lane roads.....  
Primary roads..... Secondary roads.....  
Single track R.R..... Multiple track R.R.....  
Power transmission line.....



# AERONAUTICAL INFORMATION

- Major aerodromes..... J EDNA 920
- Runway pattern and 6000 foot diameter circle is shown at 1:500,000 scale. Center of circle represents true position of airfield.
- Major aerodromes, runway pattern not available..... O
- Minor aerodromes..... O
- Seaplane base..... @
- Jet facilities available..... J

Major aerodromes portrayed have a hard surface runway length of 3000 feet or more. When runway pattern is not shown, number following the name indicates length of longest runway to nearest hundreds of feet. Aerodrome elevations are in feet above sea level.

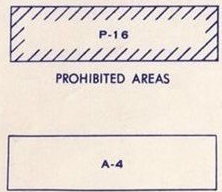
## OBSTRUCTIONS

- Vertical obstructions..... 1850 (1250)
  - Highest vertical obstruction (above MSL) within ticked lines of latitude and longitude..... 1850 (1250)
  - Multiple obstructions..... 920 (230)
  - Vertical obstructions with landmark significance..... 920 (230)
- Numbers adjacent to obstruction indicate elevation of top of obstruction above mean sea level (MSL). Numerals in parentheses indicate height above ground level (AGL). Vertical obstructions under 200 feet in height (AGL) are not shown.

## RADIO AIDS TO NAVIGATION

- ⊕ VHF OMNI RANGE (VOR)
- ⊕ VORTAC
- ⊕ TACAN
- ⊕ VOR with DME
- ⊕ Other Facilities

## SPECIAL USE AIRSPACE



ALERT, CAUTION, DANGER RESTRICTED OR WARNING AREA

NUMBERS INDICATE INTERNATIONALLY RECOGNIZED NUMERICAL IDENTIFICATION

All Special Use Airspace is portrayed in the body of this chart with the following exceptions: Those that are activated by NOTAM.

## NOTES

The representation of international boundaries on this chart is not necessarily authoritative.  
No prominent vegetation is known to exist within the area of this chart.  
Caution: Power transmission line information on this chart represents the general network and should not be considered complete.