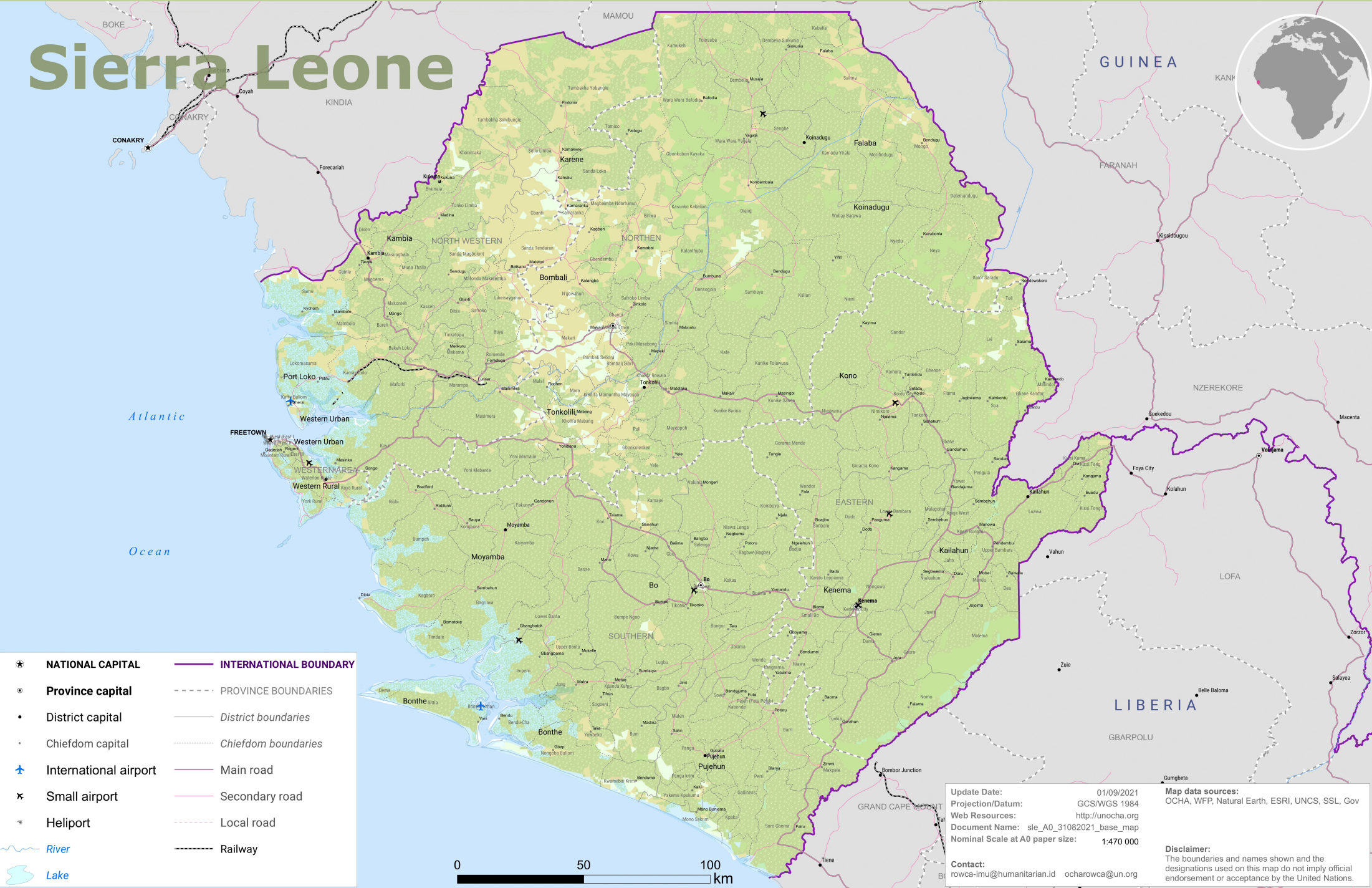
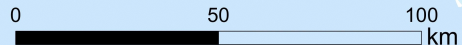


Sierra Leone



- NATIONAL CAPITAL**
- Province capital**
- District capital**
- Chiefdom capital**
- International airport**
- Small airport**
- Heliport**
- INTERNATIONAL BOUNDARY**
- PROVINCE BOUNDARIES**
- District boundaries**
- Chiefdom boundaries**
- Main road**
- Secondary road**
- Local road**
- Railway**
- River**
- Lake**



Update Date: 01/09/2021
Projection/Datum: GCS/WGS 1984
Web Resources: <http://unocha.org>
Document Name: sle_A0_31082021_base_map
Nominal Scale at A0 paper size: 1:470 000

Map data sources:
 OCHA, WFP, Natural Earth, ESRI, UNCS, SSL, Gov

Disclaimer:
 The boundaries and names shown and the designations used on this map do not imply official endorsement or acceptance by the United Nations.

Contact:
rowca-imu@humanitarian.id ocharowca@un.org