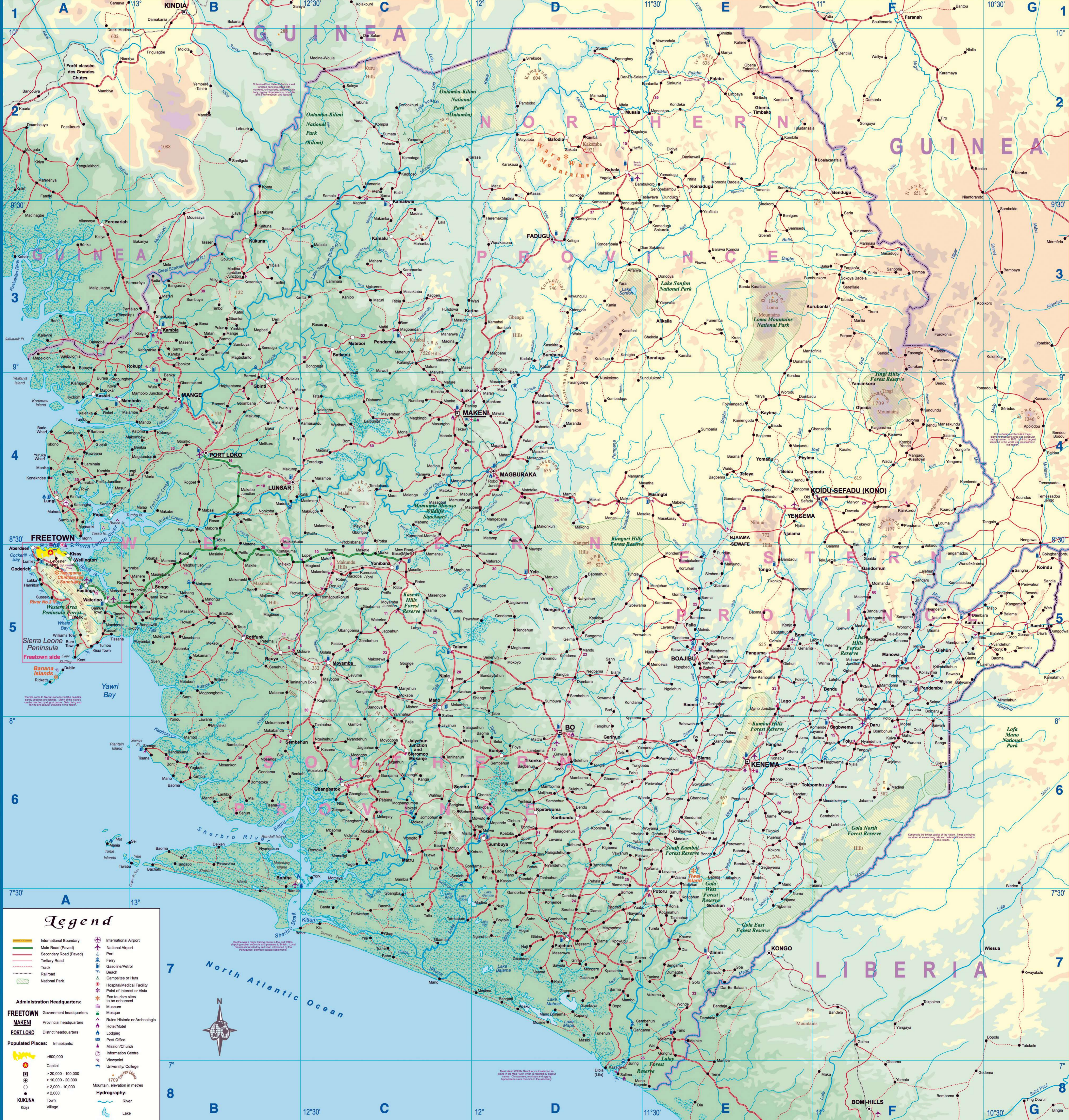


INDEX table listing geographical locations and their corresponding grid coordinates (A-G, 1-8).



Legend and Conversion tables. Includes symbols for international boundaries, roads, airports, and population markers. Conversion tables for length, area, and volume.

Relief and Projection information. Includes a color-coded relief scale and projection details: Transverse Mercator, Scale: 1:500,000.

History: Overview of Sierra Leone's history from the 18th century to the present, including the founding of Freetown and the civil war.

People: Information about the diverse ethnic groups in Sierra Leone and their languages.

Economy: Overview of Sierra Leone's economic sectors, including mining, agriculture, and services.

Where to go: Information about major tourist sites, national parks, and recreational activities.

